

Basement Corridor Before



Basement Corridor After



Basement Before

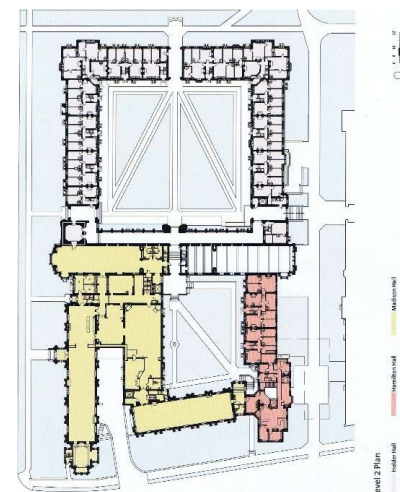


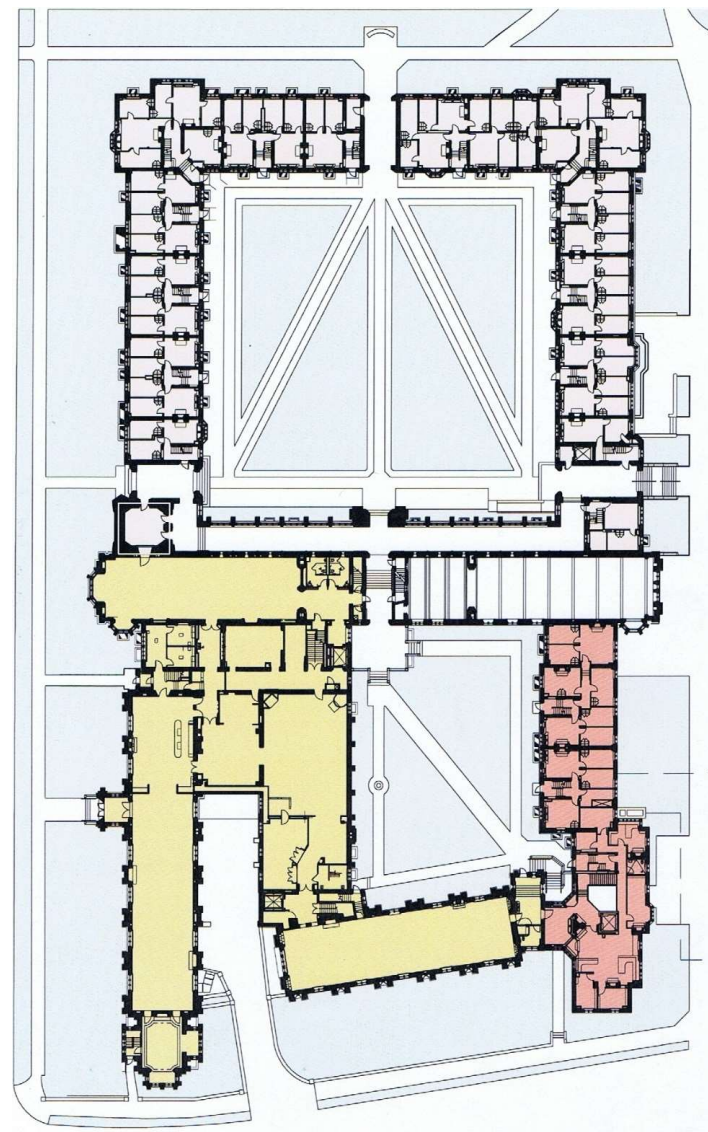
Basement After



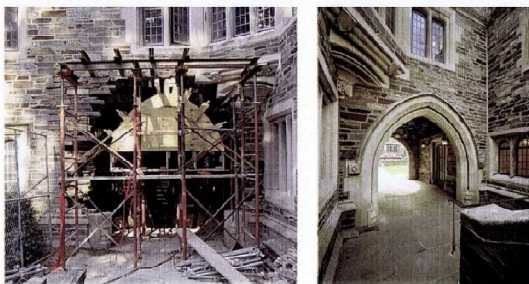
Attic Before





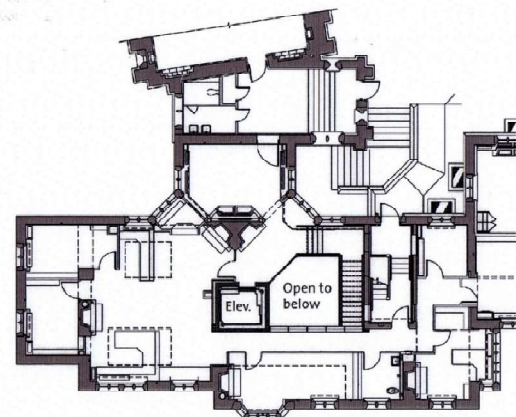


New atrium provides accessibility to both Hamilton Hall and Mestres Dining Hall

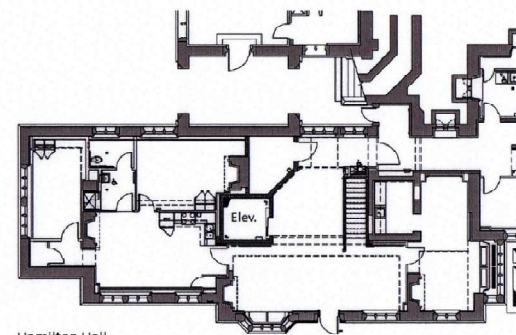


Two original limestone arches were dismantled and reconstructed to align the second floor levels and connect Hamilton and Madison Halls.

Accessibility Modifications



Hamilton Hall
Level 2 - Partial Plan



Hamilton Hall
Level 1 - Partial Plan

Accessibility for both Hamilton and Madison Halls was accomplished by creating a new atrium in Hamilton Hall and reconstructing two limestone archways at a lower elevation. Students can now easily access both their college offices and dining hall. The new circulation system provides more interaction between all elements of the college.